

Specification sheet LX 1490

Roof drainage systems LORO-DRAINJET[®] Mini DN 50 for Box gutter from 150 mm

Main drainage

Siphonic flow

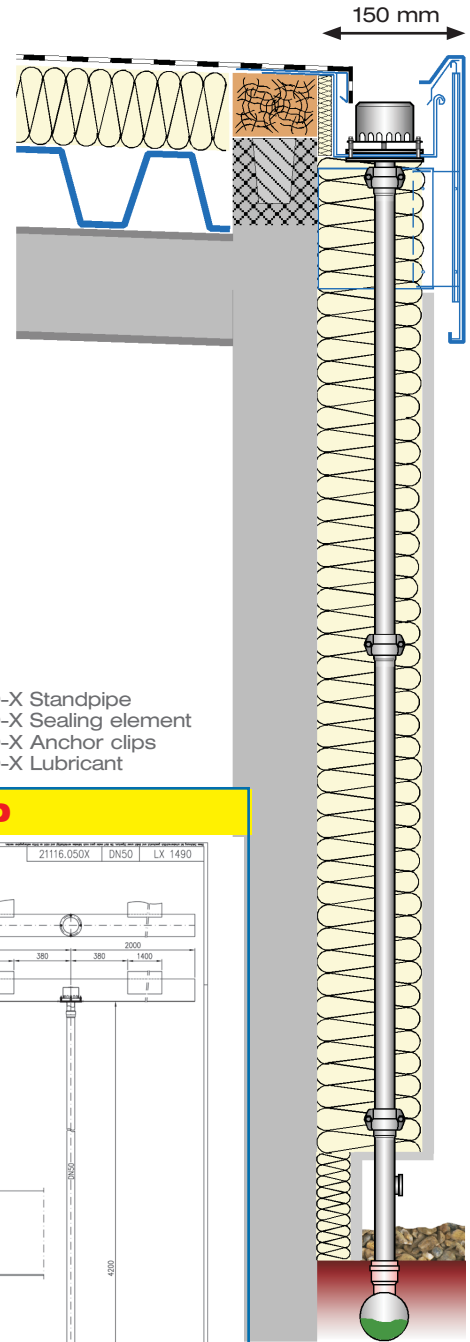
Silent Power

Discharge rate:	5,5 l/sec
Water height:	55 mm
Roof penetration:	-
Diameter:	DN 50
LX-Number:	LX 1490
Weir height:	0 mm
Drain:	not ventilated
Downpipe:	not ventilated
Downpipe height:	4,2 m
Drainage:	in sewer
Flangeform:	clamping flange

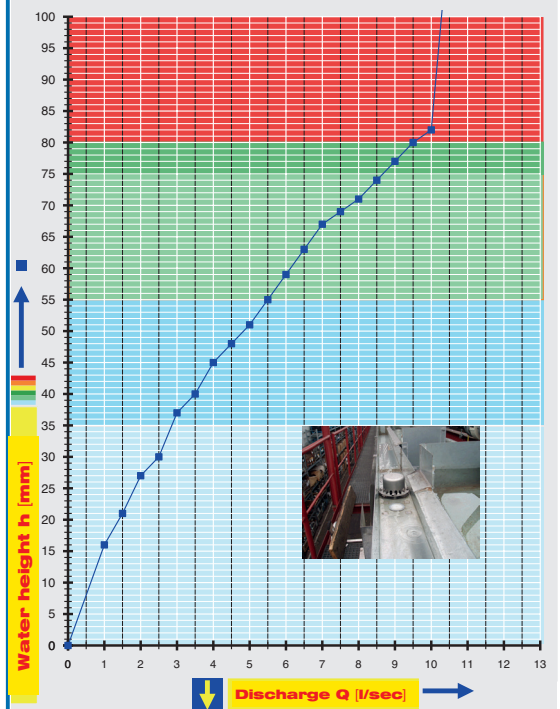
LX 1490 Piece list

1 x Art.-No. 21116.050X, DRAINJET[®] Mini DN 50
 1 x Art.-No. 01401.050X, LORO-X Pipe with one socket
 1 x Art.-No. 01201.050X, LORO-X Pipe with one socket
 1 x Art.-No. 01004.050X, LORO-X Pipe with one socket

1 x Art.-No. 05510.050X, LORO-X Standpipe
 6 x Art.-No. 00911.050X, LORO-X Sealing element
 3 x Art.-No. 00806.050X, LORO-X Anchor clips
 1 x Art.-No. 00986.000X, LORO-X Lubricant

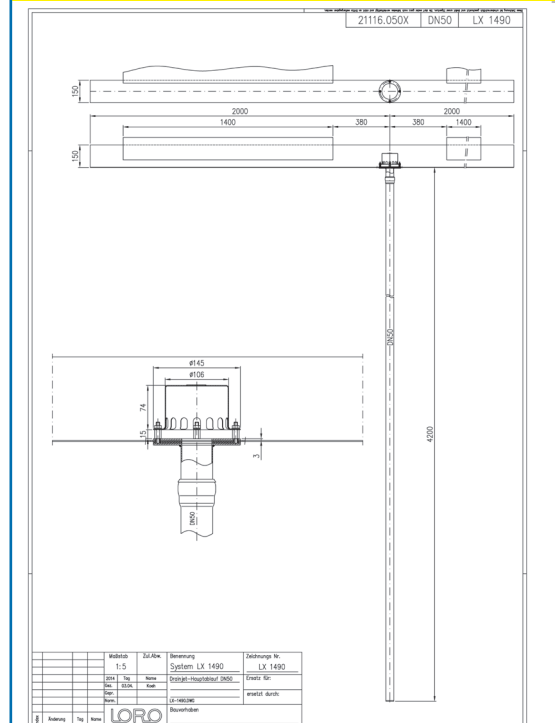


hQ - Head Discharge curve



Systempower

CAD



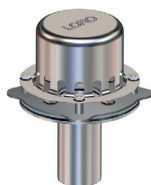
Systemshape

Water height	mm	5	10	15	20	25	30	35	40	45	50	55	60	65	70	75
Discharge	l/sec				1,2	1,6	2,1	2,9	3,6	4,3	4,8	5,5	6,1	6,7	7,9	8,6
Silent Power																

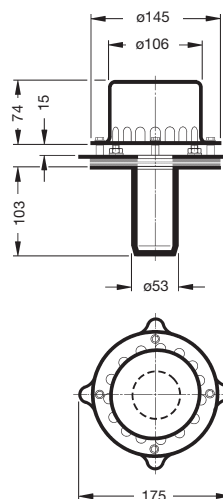
LORO-DRAINJET® Mini, DN 50

LORO-X DRAINJET® Mini

with clamping flange for
Box gutter
Drain: Art.-No. 21116.050X



LX1490-5X



LORO-X Pipe with one socket

made of hot-dip galvanised steel, DN 50

length 250 mm Art.-No. 01401.050X
length 1000 mm Art.-No. 01201.050X
length 2500 mm Art.-No. 01004.050X



LORO-X Standpipe

with cleaning opening made of hot-dip galvanised
steel, DN 50

1000 mm long Art.-No. 05510.050X
Weigt: 2,2 kg



LORO-X Anchor clip,

made of hot-dip galvanised steel, DN 50

Art.-No. 00806.050X

Weight: 0,3 kg



LORO-X Sealing element

Art.-No. 00911.050X

Weight: 0,6 kg

